

VEHICLE Toyota Hilux N80
PRODUCT Recover Point
PART NUMBER RPHIL15V3

TOOLS REQUIRED

Spanners : 12mm, 13mm, 14mm and 17mm
1/2 drive: ratchet, sockets; 17mm and 19mm
3/8 drive: ratchet; 12mm, 13mm and 14mm
10mm hex bit or allen key

1. Remove bull-bar wing under trays and centre tray.
2. Remove outer bull-bar mount plate (ARB bar only).
See figure 1
3. Place supplied crush tube into chassis rail and align with rear most hole (ARB BAR).
 - a. Use wire or rod from inside of chassis rail to hold crush tube in position
 - b. Use supplied "alignment bolt" and screw into front hole of threaded plate
This will help when aligning bolts up, see figure 2
4. Fit RPHIL15V3 into position and fit centre bolt (ARB BAR).
5. Fit angled bracket into front hole and lower horizontal hole (ARB BAR).
See figure 3
6. Fit rear most bolts and 100mm bolt through chassis and crush tube.
7. Remove upper most forward facing bolt and fit supplied M10 x 40mm bolt and tighten.
 - a. This step to be followed with all bullbars
 - b. With OL bar, use supplied notched washer
See figure 10
 - c. Fit large I.D spacer washer, flat washer and nut
 - d. With all hardware fitted, tighten all hardware to recommended torque
See figure 4
8. Fit slotted angle bracket, leave loose for now (ARB BAR).



VEHICLE Toyota Hilux N80
PRODUCT Recover Point
PART NUMBER RPHIL15V3

TOOLS REQUIRED

Spanners : 12mm, 13mm, 14mm and 17mm
 1/2 drive: ratchet, sockets; 17mm and 19mm
 3/8 drive: ratchet; 12mm, 13mm and 14mm
 10mm hex bit or allen key

9. The under bar wings (of ARB bullbar) will need minor trimming in order to fit with RPHIL15V3.
 See figure 5 - side wings modifications
 See figure 6, 7, 8 - centre tray modification
 See figure 9 - trimming complete overview

10. With all guards bolted in place, tighten the slotted angle bracket to the recovery point.

11. When fitting with an Opposite Lock bullbar, some steps will vary.
 Important: Keep outer bullbar mounting plate when fitting with OL bullbar

12. Centre bolt hole through chassis is not used with OL bar.
 a. When fitting supplied bolts through chassis, ensure to use existing crush tubes

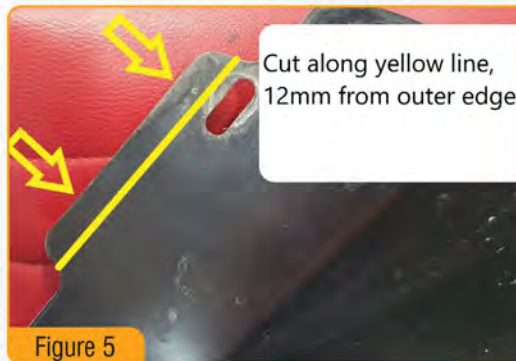


Figure 5



Figure 6

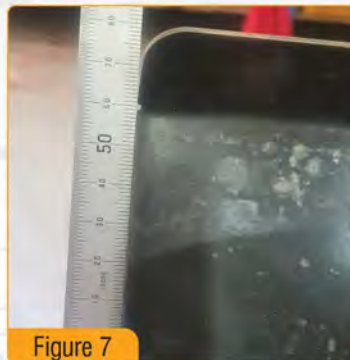


Figure 7



Figure 8

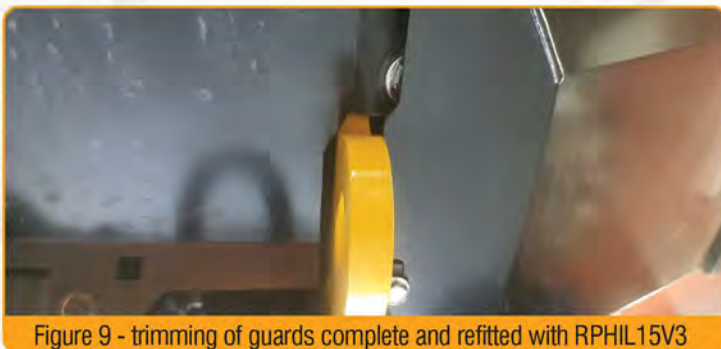


Figure 9 - trimming of guards complete and refitted with RPHIL15V3



Figure 10 - RPHIL15V3 fitted with Opposite Lock Bar